

# KB Technologies SL QuickLaunch

## Multiple companies, system databases, or servers?

Did you ever sign in to the wrong company?

Did you ever key data only to realize that you are in the wrong database?

Does switching companies just take too long when you also have to change system databases or servers?

Tired of being prompted to login to the last company you used instead of the company that you *want* to use?

Is Windows Authentication mode putting you into the wrong company more often than not?

### SL QuickLaunch is easy.

Each copy includes free technical support and free upgrades, as they become available, for as long as we support the product. Never any recurring support fees.

### Product Overview

Define combinations of server, system database, and company. Assign a meaningful alias to each combination.

Quickly launch Dynamics SL directly into the desired server / database / company combination from the system tray menu or from desktop shortcuts.

SL QuickLaunch learns the databases and companies that you use.

Even works with SL 7.0 in Windows Authentication mode!

### Never use the System Database button again!

Easy to install and configure.

### Product Type

VB 2005 Developed Application, .NET 2.0

### Product Availability

Shipping Now

### Pricing

\$1,500.00 per domain  
(North America)

### Technical Requirements

Dynamics SL Version 6.x and 7.0  
Environments

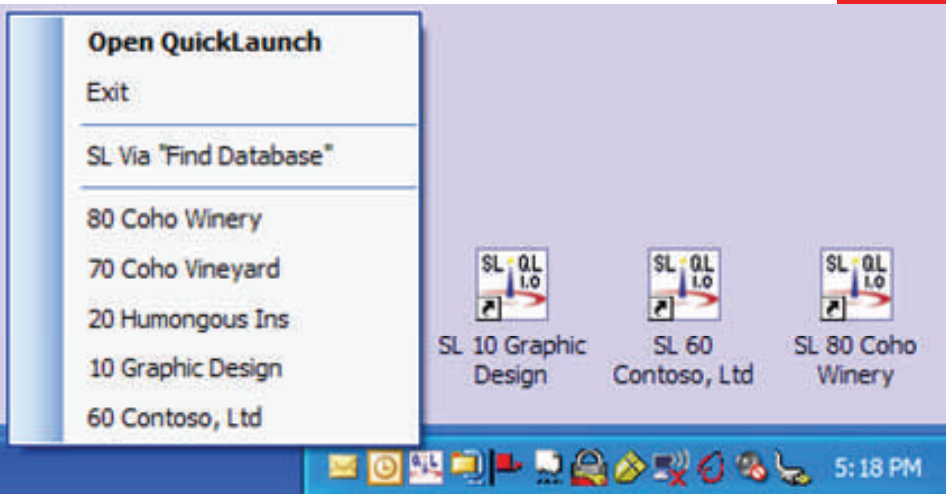
### Supported Dynamics SL Versions

Dynamics SL Version 6.x and 7.0

Supported Desktop OS  
Windows XP Professional, Windows Vista Business

### Keywords

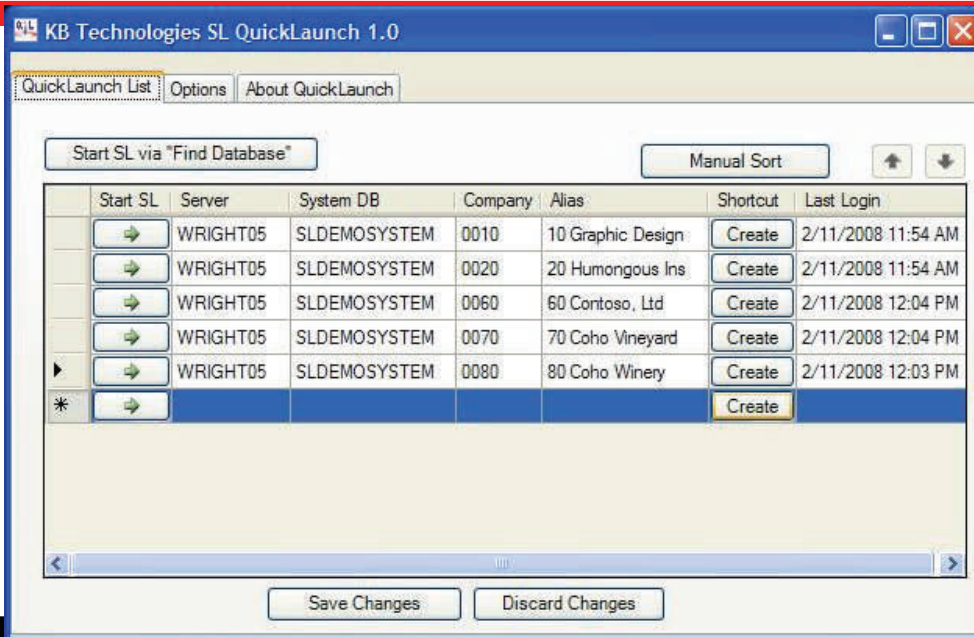
Menu, Login



**KB Technologies**  
Innovative Ideas in Business Technology  
A Division of Kiefer Bonfanti & Co. LLP



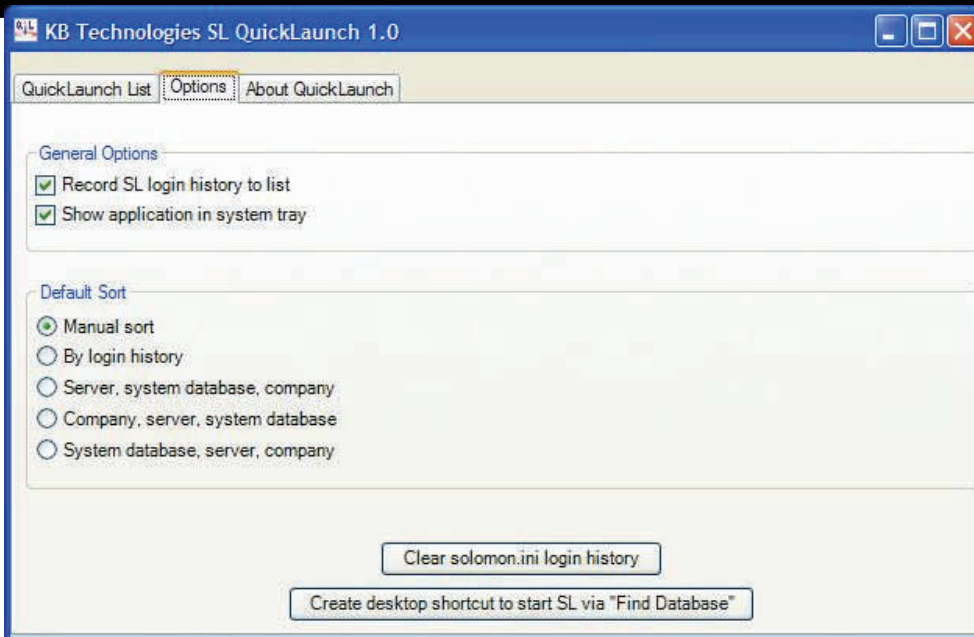
# KB Technologies SL QuickLaunch



## Make It Easy.

Easy to use and configure, SL QuickLaunch allows the user to define combinations of Server, System DB, and Company, assign a meaningful alias to the combination, and create an optional desktop shortcut. Launching SL directly to the correct combination couldn't be easier!

*Designed to help companies using Dynamics SL to reduce the frustration, complexity, uncertainty, and effort associated with the login process in environments with multiple companies, system databases, and/or servers.*



## Do It Your Way.

Settings are profile-specific. Create an SL QuickLaunch list that works for you. Control the sort order of the SL QuickLaunch list to meet your needs. Use the list, the desktop shortcuts, or both.